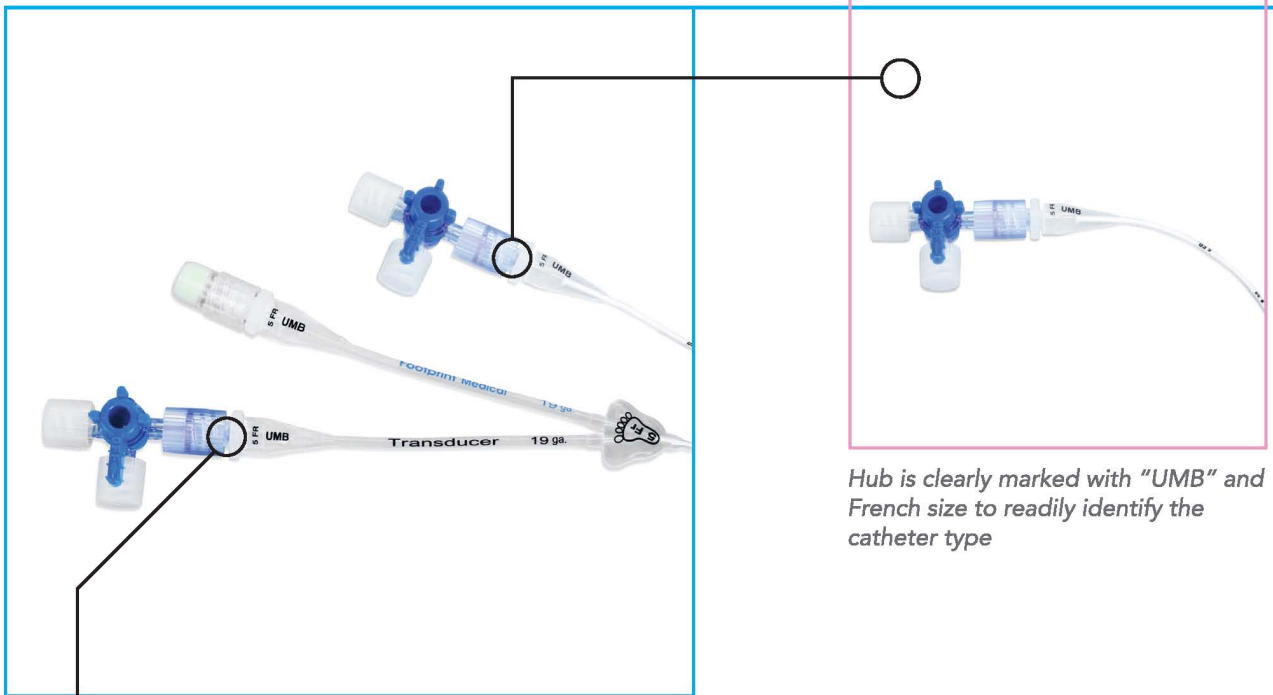


# Umbilical Catheters



Hub is clearly marked with "UMB" and French size to readily identify the catheter type

Dual lumen hubs are color coded and clearly labeled for size and transducer use



## Umbilical Catheters

- Clear, indelible markings allow for accurate placement, line identification, and assessment
- Made of soft, biocompatible medical grade silicone or polyurethane
- Bold indelible markings every centimeter
- Latex free & DEHP free
- Radiopaque stripe for confirmation of tip placement by x-ray
- Smooth tip surface designed to reduce thrombogenicity



# Ordering Information for: Umbilical Catheters



## Single Lumen Umbilical Catheters

P1UVC-2530	Polyurethane Umbilical Catheter (Single Lumen)	2.5 Fr.	5/cs
P1UVC-3540	Polyurethane Umbilical Catheter (Single Lumen)	3.5 Fr.	5/cs
P1UVC-4340	Polyurethane Umbilical Catheter (Single Lumen)	4.3 Fr.	5/cs
P1UVC-540	Polyurethane Umbilical Catheter (Single Lumen)	5.0 Fr.	5/cs

S1UVC-3540	Silicone Umbilical Catheter (Single Lumen)	3.5 Fr.	5/cs
S1UVC-540	Silicone Umbilical Catheter (Single Lumen)	5.0 Fr.	5/cs
S1UVC-6540	Silicone Umbilical Catheter (Single Lumen)	6.5 Fr.	5/cs

## Dual Lumen Umbilical Catheters

S2UVC-436	Silicone Umbilical Catheter (Dual Lumen)	4.0 Fr.	5/cs
S2UVC-536	Silicone Umbilical Catheter (Dual Lumen)	5.0 Fr.	5/cs

*"Helping tiny babies make their own footprints in the world..."*

Distributed By:



Phone: 847.891.6210  
Fax: 847.891.6215  
[www.accessmedicalsupply.com](http://www.accessmedicalsupply.com)

Access Medical Supply, Inc.



12727 Cimarron Path  
San Antonio, TX 78249  
210.226.2600  
[www.footprintmed.com](http://www.footprintmed.com)